

# TRANSPORTER (TR)

## 2/3rds of the weight and 1/2 the fuel consumption of a forklift

Innovation

Simplicity

Savings



A dependable high capacity straddle carrier designed for intermodal terminals, trucking terminals, small ports and logistics centres. Comes in 1-high, 2-high and 3-high models.

*What makes the Transporter the best solution for small to mid-sized terminals? "Innovation, experience and focus".*

The Transporter is the only straddle carrier up to 3-high designed specifically for small to mid-sized terminals. First produced in 1978, the new 4th generation Transporter continues our quest to build the lightest, strongest and most reliable 3-high container handler to meet the needs of the small terminal market.

**Low fuel and pavement costs** - we keep the machine light. The Transporter's innovative computer designed structure is built to flex as the machine moves. This keeps the weight of the machine down and eliminates the need for a complex and costly suspension. Yet it does not require expensive concrete pavements and can operate on hardstand. At 2/3rds of the weight of reach-stackers, forklifts or port-side straddles its fuel consumption is up to 50% less.

**Reliability and low maintenance costs** - we avoid needless complexity. The Transporter has an elegantly simple mechanical system, using high-precision hydraulic motors to drive the wheels and hydraulic cylinders for lifting the load. Fewer moving parts means there is less to go wrong, higher reliability and availability, and lower service costs.

**Comfort** - we focus on the small terminal. The Transporter's low mounted air conditioned cab provides good visibility for stacking and truck loading operations and the quick and easy operator access required in small terminals. Simple operator controls reduces driver fatigue and training time.

Call us to see how the Transporter can reduce the total cost of container handling in your operation - we can help.

ISOLOADER - gets your  
containers moving

AU +61 2 6658 1333  
EU +33 6 2907 2657  
US +1 760 621 3830  
sales@isoloader.com  
[www.isoloader.com](http://www.isoloader.com)

**ISOLOADER**  
CONTAINER & HEAVY LOAD HANDLING SOLUTIONS

# TRANSPORTER (TR)

A dependable high-capacity workhorse with all of the essential features for small to mid-size terminals.

**light and strong structure** - each end of the U-shaped structure shares the load independently, allowing the structure to flex. Lowering the weight reduces fuel and pavement costs.

**simplified lifting assembly** - hydraulic cylinders and sheaves are simple to maintain and eliminate the need for complex control systems.

**flexible load handling** - standard telescoping spreader can be customized to handle swapbodies, flatracks and custom loads.

**reducing tyre costs** - a true steering geometry practically eliminates tyre scuffing. Tyres last 3 times as long as on forklifts and reach-stackers, plus there is less damage to your pavements.

**optional 6 wheels** - additional wheels reduce the loading for use on poor quality pavements. Standard is 4 wheels on 1-high and 2-high machines, and 6 wheels on 3-high machines.

**maneuverable** - a short 5m wheel base means a tight turning radius of under 9m using 2 wheel steer, or under 8m using the optional 4 wheel steer.

**easy to operate** - simplified mechanical systems reduce maintenance costs and reduce the complexity of the controls. Operator training takes only 1 day.

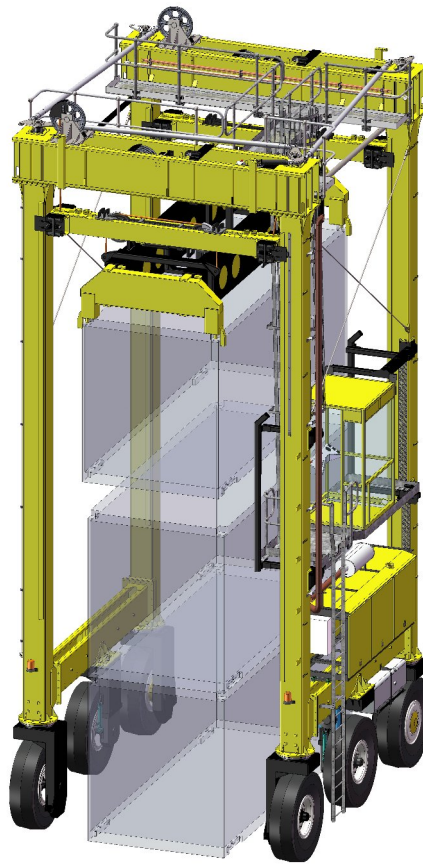
**reducing driver fatigue** - the cab is air-conditioned for operator comfort and low-mounted for quick and easy access.

**clear visibility** - the low position and glass of the cab mean good visibility for truck loading and container stacking.

**custom cab position** - for better handling. A front mounted cab can be used when travel is primarily in one direction; for 1-high machines the cab can be mounted under the side-beam for ground level access and optimal visibility handling trucks.

**rough ground and steep grades** - up to 10% can be handled with the optional 4 wheel drive.

**hydrostatic braking with emergency disc parking brake** - no separate braking system is required for speeds up to 20 km/hour - increases reliability and reduces maintenance costs.



**easy bi-directional operation** - the side mounted cab and 4 wheel steering means that the machine handles the same in either direction - increasing driver efficiency.

**positive displacement hydraulic wheel motors** - make it easy on the driver by providing infinitely variable speed control independent of the load, smooth stopping without backlash and precise positioning - all with a single foot pedal.

Key specifications	
Travel speed*	20km/h
Hoist speed	13m/min
Load under spreader*	35t
Spreader side shift	+/- 125mm
Wheel loading	< 12t
*up to 35km/h and 40t for 1-high	

Further options are available to suit your exact needs. Call us to see how the Transporter can optimize your handling.